



REV.B 8/03

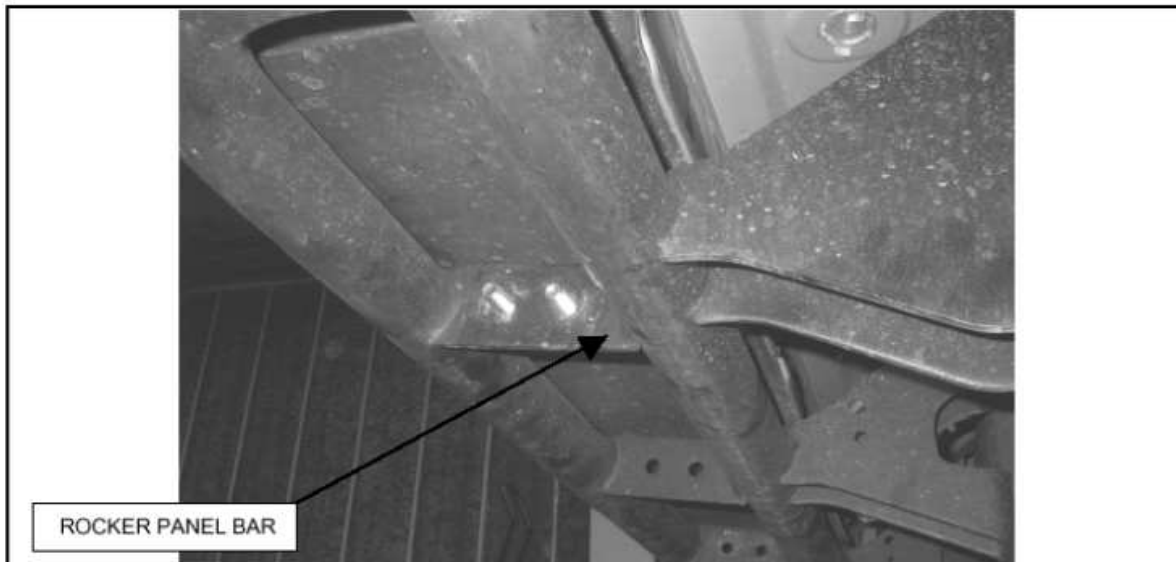
Installation Instructions
2002 - 2010 HUMMER H2 (ONLY SUV)

<u>QTY</u>	<u>PARTS DESCRIPTION</u>	<u>QTY</u>	<u>PARTS DESCRIPTION</u>
16	7/16" x 1" HEX BOLTS	16	7/16" HEX NUTS
16	7/16" LOCK WASHERS	1	4208D DRIVER SIDESTEP
16	7/16" FLAT WASHERS	1	4208P PASSENGER SIDESTEP

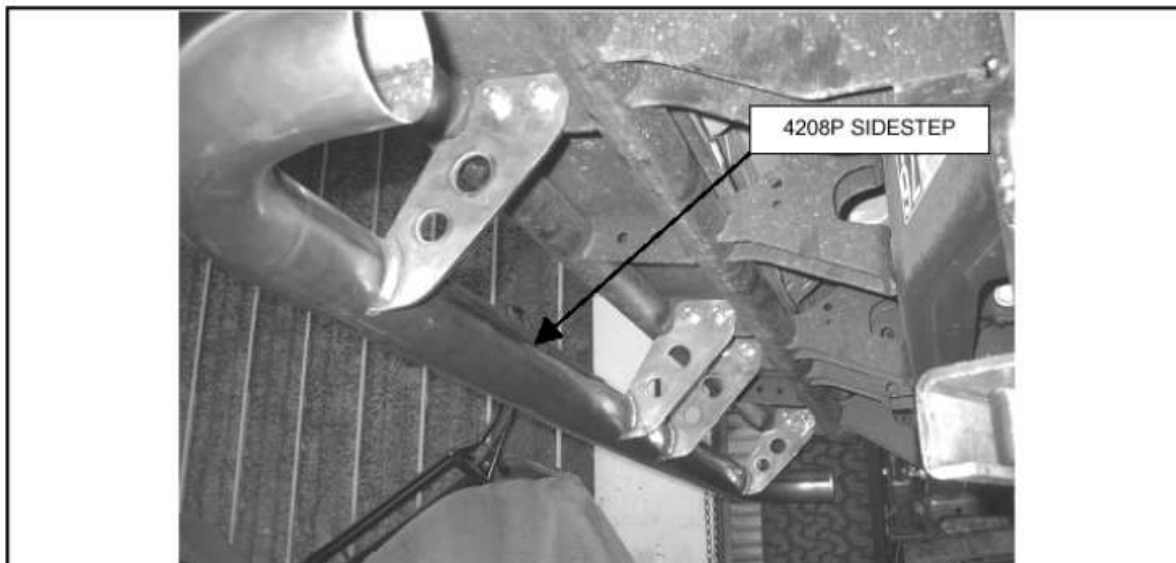
INSTALLATION INSTRUCTIONS

Note: INSTALLATION ONLY WITH ROCKER BARS

STEP 1. REMOVE CONTENTS FROM SHIPPING CARTON AND CHECK PARTS.



STEP 2. BEGIN THE INSTALLATION WITH THE PASSENGER SIDE. LOCATE THE HOLES IN THE ROCKER PANEL BAR, USED TO ATTACH THE FACTORY SIDESTEPS AND ACCESSORIES.



STEP 3. ATTACH 4208P SIDESTEP, TO THE ROCKER PANEL BAR, USING THE 7/16" FASTENERS AS SHOWN.

STEP 4. ALIGN THE SIDESTEP WITH THE VEHICLE AND TIGHTEN ALL NUTS AND MOUNTING BOLTS.