



Installation Guide

* For automatic transmission vehicles only

RS-RAM73

REV 01132021

For 2019-2023 Ram Trucks: Gas or Diesel Push-to-Start



You may view a high-resolution color version of this guide online at <http://install.kleinn.com/RSRAM71> or by scanning this QR code. ***Please read this guide in its entirety or you will have issues!***

-This remote start will monitor the vehicle lock circuit and use the pulses generated by pressing lock 3 times on your OEM remote to start the vehicle.

-This is a pre-wired 'semi' plug and play kit. One wire connection is required into the vehicle for basic installation. The kit also includes an optional parking light flash feature. If used, that feature requires one additional wire connection.

-We have already loaded the correct firmware into the remote start module. You will need to pair the module to your vehicle when the wiring is complete. Instructions are on page 5. Depending on the configuration of your vehicle, you may also need to make up to two programming changes to the module. This is addressed in detail on Page 2.

Overview

There are 6 basic steps to this remote start installation. We're going to address each of these:

1. Download and install Flash Link Manager software.
2. If required, set correct options in remote start module.
3. Make the plug-in and wire connections.
4. Pair the remote start to the vehicle.
5. Test the system.
6. Button it up!

Step 1: Download and install Flash Link Manager software

**The Flash Link Manager (FLM) software only works on a Windows computer.

Enter the following link into your web browser, then download and install the software:

<https://fortin.ca/en/support/flashlinkmanager.html>

Next, open the software and log in with the following credentials:

email: flash@kleinn.com

password: Flash2020

Once the (FLM) software installed and open, then connect the Flash Link Updater (FLU) to the USB port of your Windows computer. The (FLM) software will detect (FLU) and display a message that the module is not connected, this is normal. Do not plug the remote starter into the (FLU) tool until you have completed the wiring and vehicle programming procedure at step 3. Leave the computer and software in this state ready to plug the module in when the time comes, and proceed with the wiring connections.

Step 2: Making settings changes in the remote start module

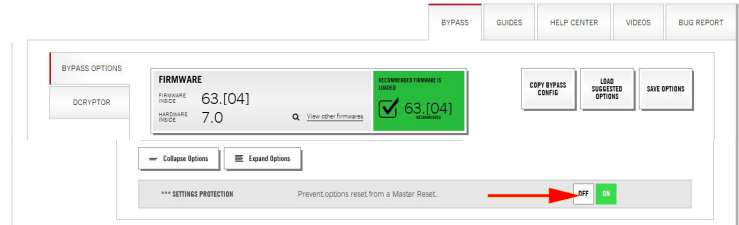
Ram trucks are made with both gas and diesel engines. The specific configuration you have may require one settings change in the remote start module. The default settings in the remote start are for diesel engine and Push-To-Start ignition. If that's what you have, no settings changes are required. Proceed to Step 3: Wiring.

If you have a gas engine you can leave the fuel type set to diesel. The only affect is that will just have a 20-second delay between when you press lock/lock/lock and when your truck starts. Or you can disable the diesel start delay altogether and the delay will only be about 5 seconds.

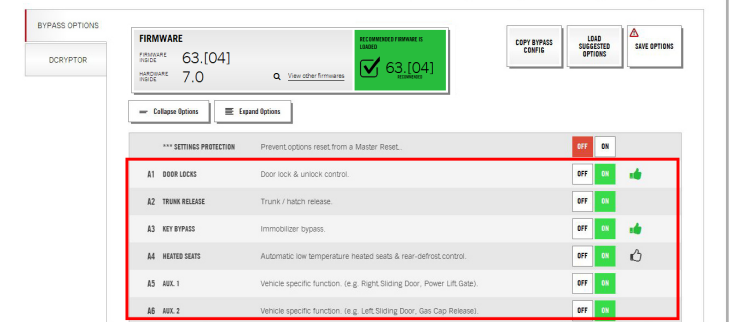
Begin by opening the Flashlink Manager application and plugging in the remote start module. It will take the application about a minute to read the module, then you'll see the screen below. The display will show a Ram truck. The year does not matter - firmware and settings for 2019-2020 are all the same.



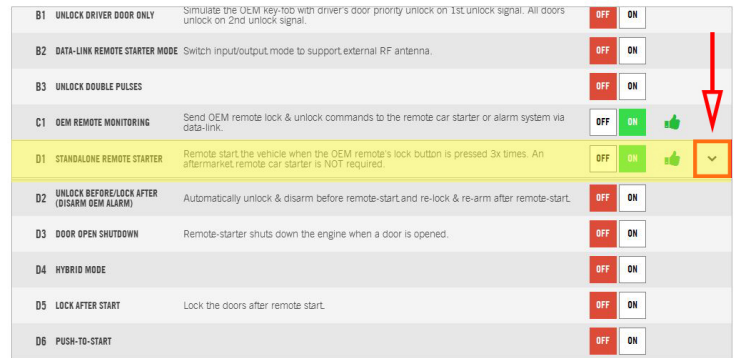
2.1 Once this screen loads, look to the bottom of the screen and click the "OFF" button in the Settings Protection row.



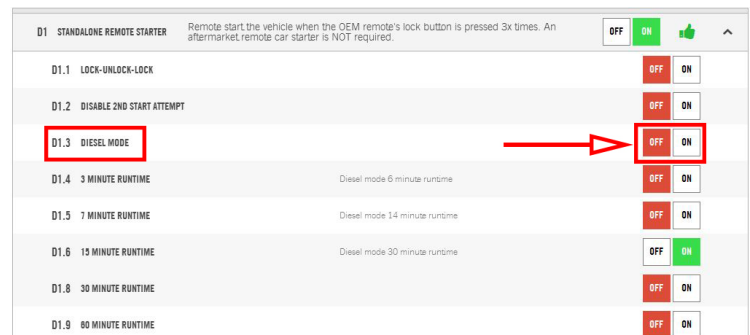
2.2 The remote start settings options will display.



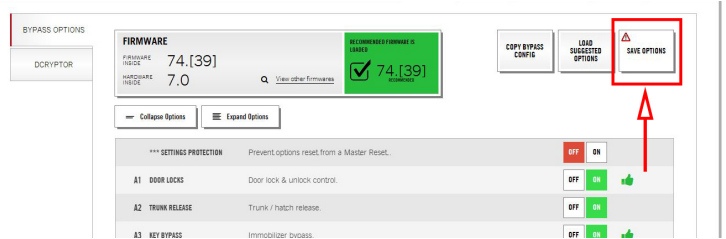
2.3 Scroll down to the "D" section, then click the downward arrow on the far right side of D1. This will open the "D" submenu



2.4 If you have a gas engine and wish to turn off the diesel delay, click the "OFF" button on row D1.3



2.5 Once you have made your settings changes, click the "Save Settings" button at the top right of the screen. Unplug the module and proceed with making your wiring connections.

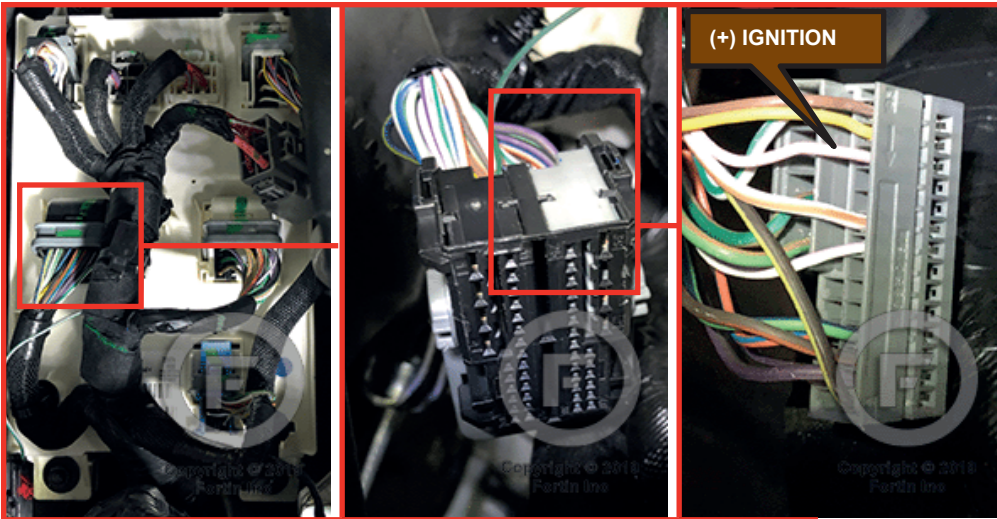


IMPORTANT:

If you wish to change your run-time settings, you may select from options D1.4 through D1.9. **DO NOT CHANGE ANY OTHER SETTINGS.** There are many settings within the options menu that if changed could make the system inoperable or even damage the vehicle. Many of the settings you see that may seem like a good idea are not a good idea. Don't go there!

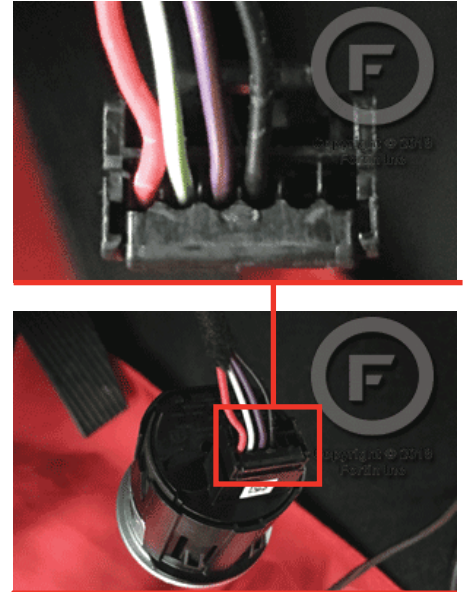
Step 3: Wiring

①

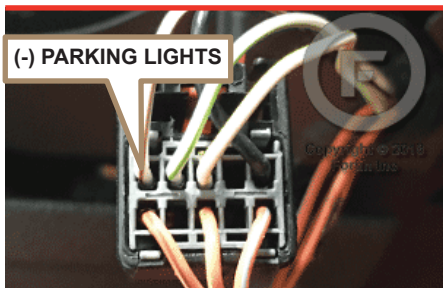


BCM, left side of dash.

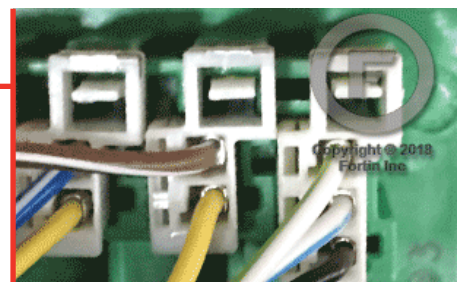
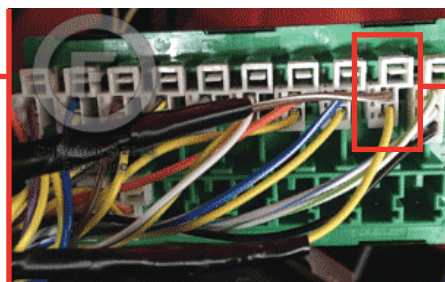
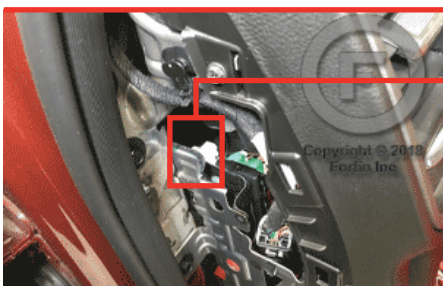
② At Push-to-Start button.



③ At parking light switch.

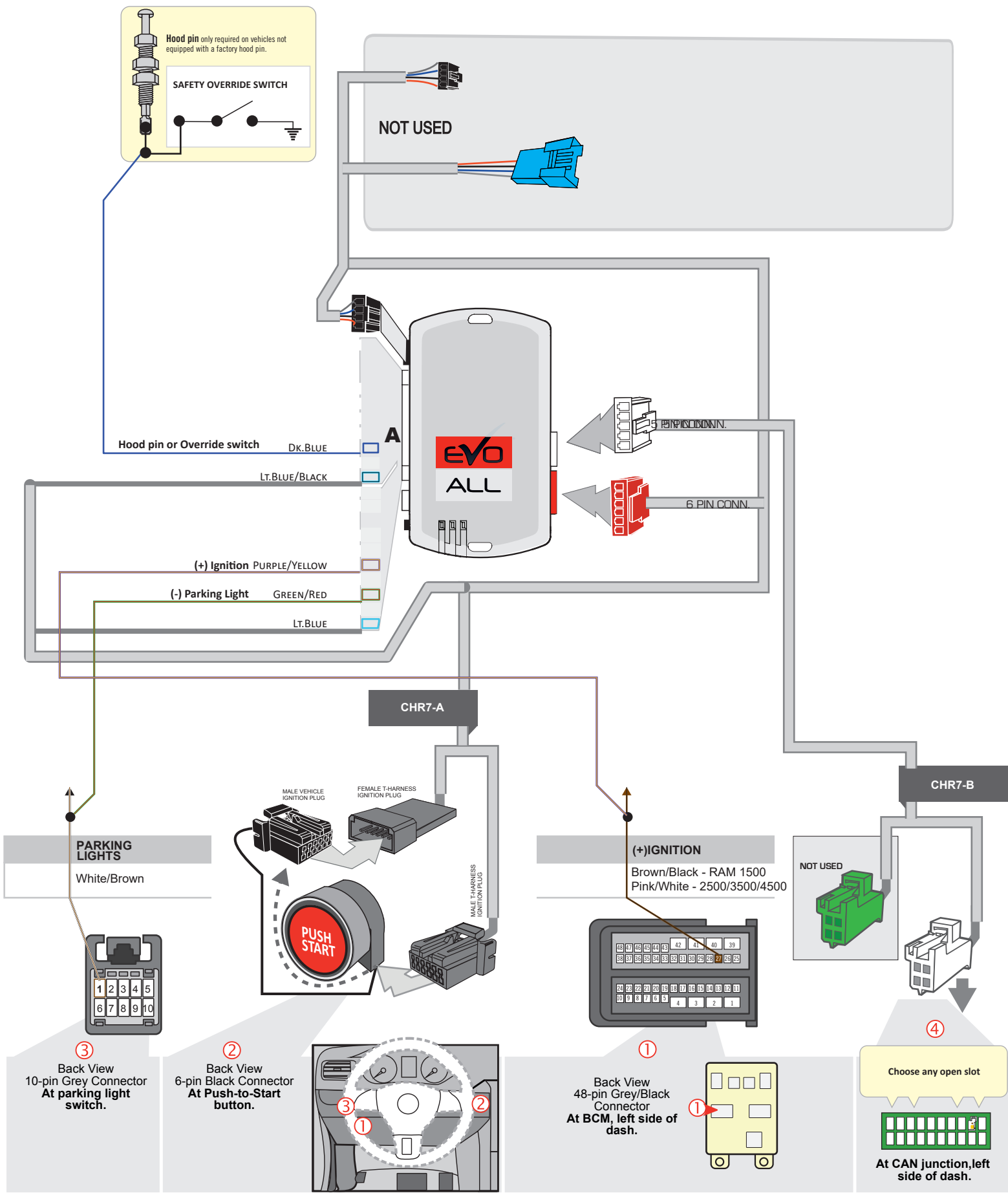


④ At CAN junction, left side of dash.



System Wiring Overview

NOTE: The CHR7A wiring harness includes a bundle of loose wires. Depending on your vehicle and options choices you will need up to three of these wires. The remaining wires can be cut short and taped up.



3.1 Connect the CHR7-A harness. The male OEM plug on the back of the vehicle Push-To-Start button or the ignition switch will be located to the right of the steering column. Release the connector, then connect the male t-harness plug into the receptacle, and plug the female t-harness plug into the male OEM plug.

3.2 Make the connection for +12v Ignition. On the remote start, it's the Purple/Yellow wire that's part of the bundle of loose wires attached to the CHR7A harness. In the vehicle it will be in the 48-pin grey/black connector at the BCM on the left side of the dash ignition switch. See photos on Page 3. Tap the Purple/Yellow wire from the remote start on to the Brown/Black wire in the connector. This is the only required wire-on-wire connection.

3.3 Connect the CHR7-B T-Harness. At the left end of the dash, use a pry tool to remove the plastic cover then locate the green CAN junction block behind it. Plug the WHITE CAN connector in to any open slot. The Green CAN connector on the CHR7-B is not used.

3.5: Optional wiring connections

Parking lights - This will serve as a visual indicator that the vehicle is running. If you wish to have this option, locate the Green/Red wire in the bundle of unused, loose wires. Attach that to the White/Brown parking light wire at the back of the parking light switch, Pin position 1 as shown in the system wire diagram. To assist with identification, a photo of the back of the parking light switch can be found on Page 3.

This is a 'tap-on' connection. Do not cut the White/Brown parking light wire in the vehicle.

Hood Pin - This is an important safety feature. It de-activates the remote start while the hood is open to prevent injury from accidental remote starting while working under the hood. Most Ram trucks will have an OEM hood pin that is read by the remote start module. In these vehicles, installation of the aftermarket hood pin is unnecessary. If you are uncertain as to whether or not your truck had factory hood pin - after you complete the remote start installation and test the system, try remote starting the vehicle with the hood open. If the vehicle will not start, you have a factory hood pin. If the vehicle does start, you do not.

If you install the hood pin, it must be mounted so that:

- a. The body of the pin is mounted to metal
- b. The pin is depressed when the hood is closed and released when the hood is open.

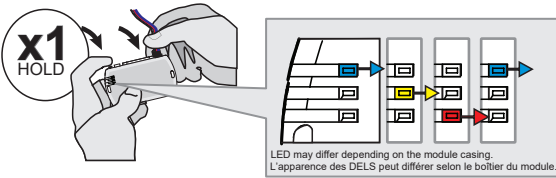
Connect the Dark Blue wire from the loose wire bundle to the hood pin (you may need to extend the wire). The ground signal from the hood pin on that Dark Blue wire will disable the remote start system.

Valet Switch - The valet switch can also be used to disable the system.

- a. Connect one side of the switch to the Dark Blue wire from the loose wire bundle
- b. Connect the other side of the switch to ground

Step 4: Programming

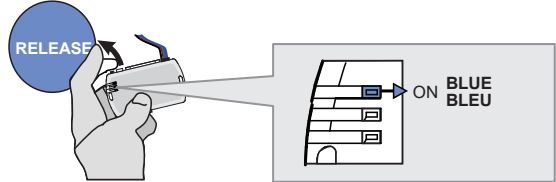
1



Press and hold the programming button:
Insert the 4-Pin (Data-Link) connector.

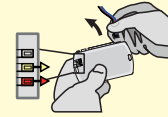
↳ The Blue, Red, Yellow and Blue & Red LEDs will alternatively illuminate.

2

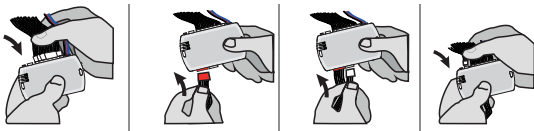


Release the programming button when the LED is BLUE.

If the LED is not solid BLUE disconnect the 4-Pin connector (Data-Link) and go back to step 1.

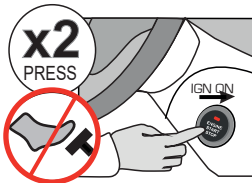


3



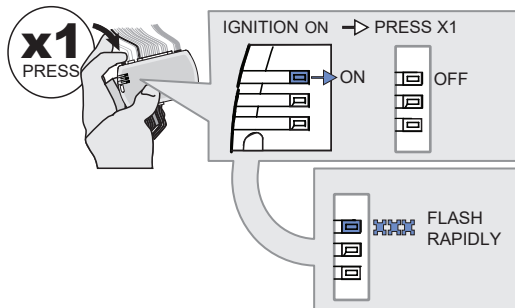
Insert the required remaining connectors.

4



Do not press the brake pedal.
Press the START/STOP button twice to turn ON the ignition.

5



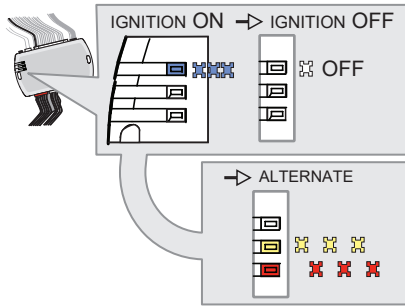
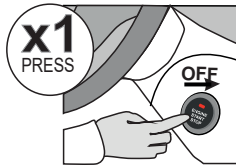
Press and release the programming button once (1x).

↳ The BLUE LED will turn off.

↳ The BLUE LED will flash rapidly.

CONTINUED NEXT PAGE

6

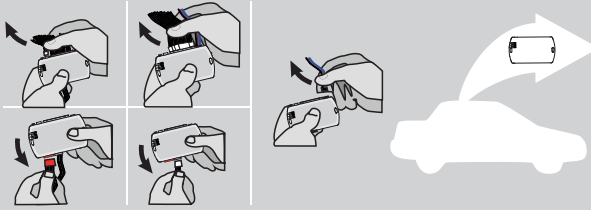


Press the START/STOP button once to turn OFF the ignition.

↳ The **BLUE LED** will turn off.

↳ The **RED and YELLOW LEDs** will alternate.

7



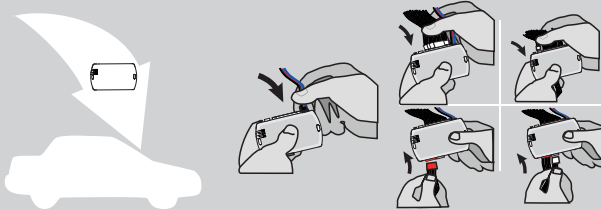
Disconnect all the connectors. The Data-Link (4-pin) connector should be disconnected last.

8



Follow the instructions on Page 8

9



AFTER DCRYPTOR PROGRAMMING IS COMPLETED
Go back to the vehicle and **reconnect** the 4-Pin (Data-Link) connector and after, all the remaining connectors.



The module is now programmed.

How to Do The Dcryptor Process

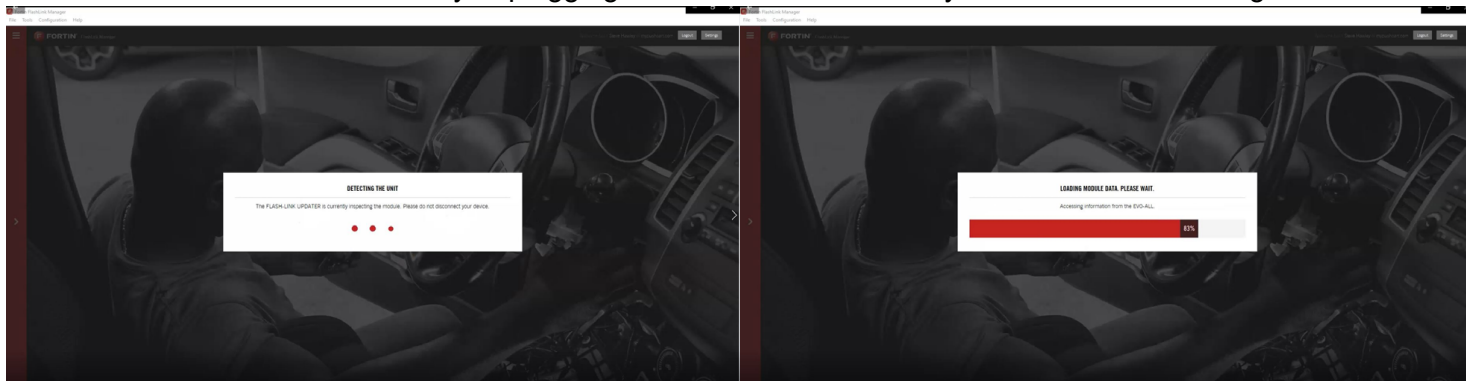
As part of the initial programming procedure, the remote start module will read the digital code from your key that overrides the anti-theft system. Doing the Dcryptor programming permanently writes that code in to the remote start's memory.

Start by bringing the remote starter module to your computer and plug it into the supplied four-pin plug from the Flashlink Updater

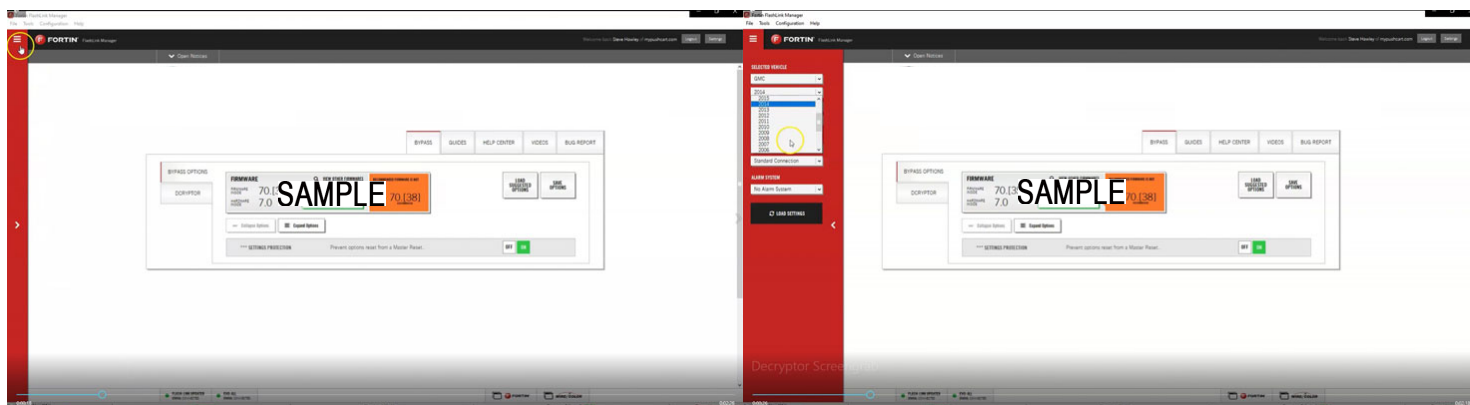
For a video on how to do these steps visit:
www.kleinn.com/flashlink



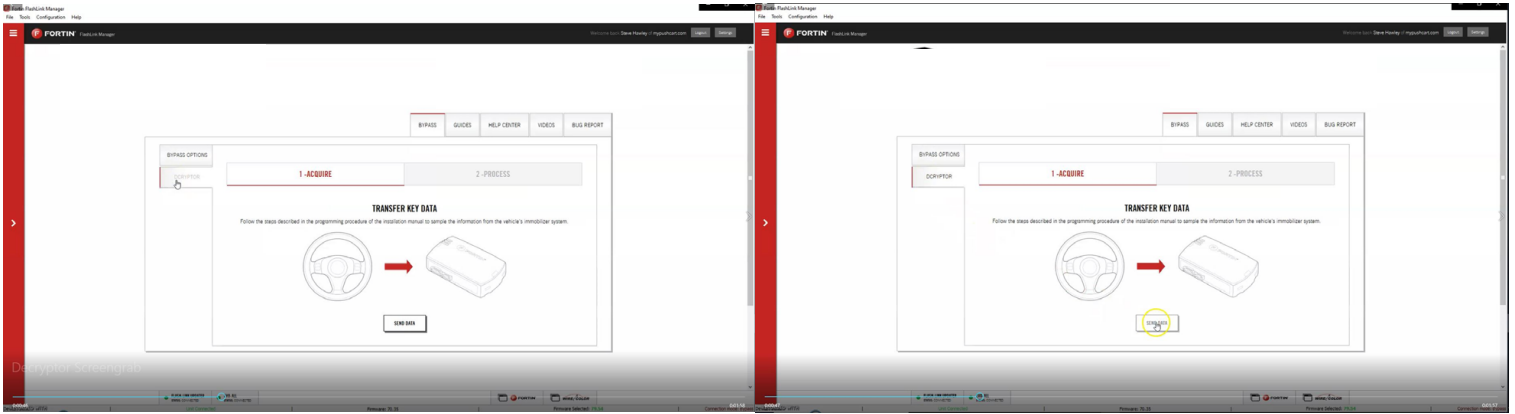
The software will detect you plugging it in and will automatically load the current settings.



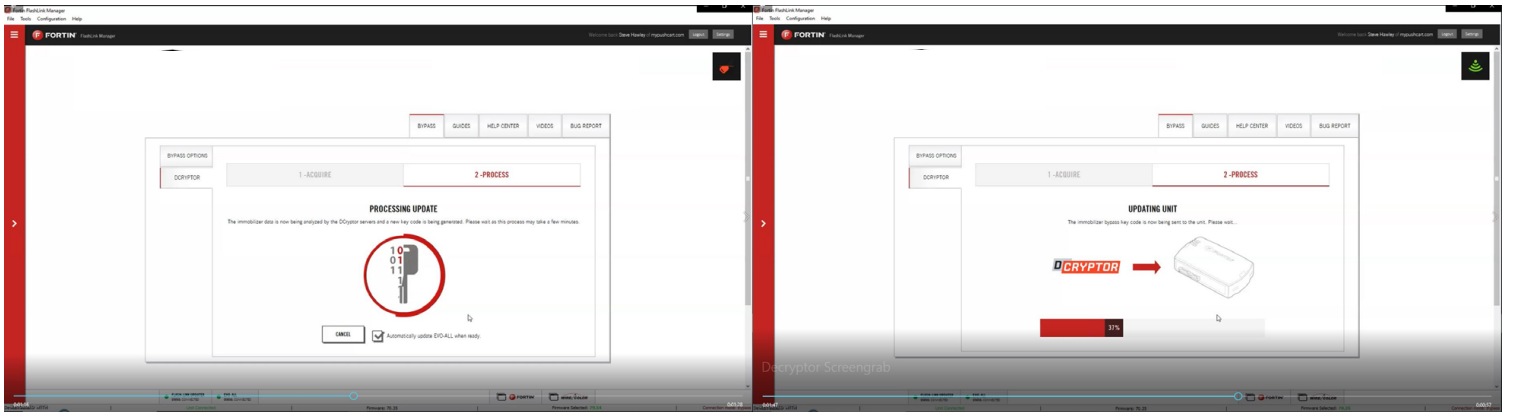
The first step is to select your vehicle. Click the three bars at the top of the Red bar on the upper left corner of the screen. Select your make, year, model, key type and then click load settings. **Do not change any other dropdowns or any options - we have already done these settings for you.**



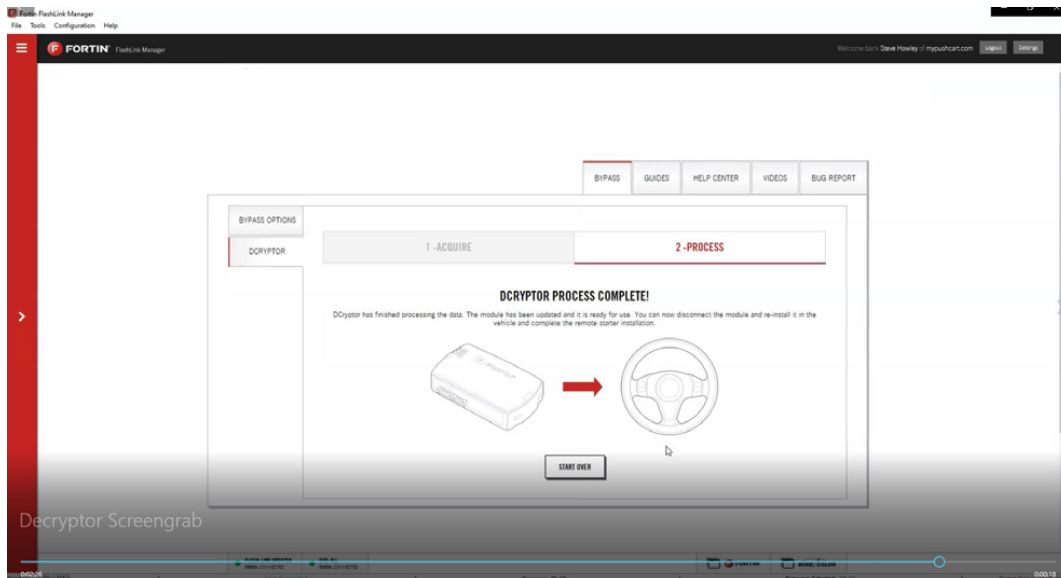
Next, click the Dcryptor tab. Then click on the Send data button.



Wait while the updater reads data from the remote starter. Once it is done it will update the remote starter and you will need to wait again. You will see a status bar at the bottom of the screen. When it gets to 100%, the Dcryptor process is complete.



You can now unplug the remote starter module and plug it back into the connectors in your vehicle. Make sure to plug in the power connector first and then the rest of the plugs afterward. Do not hold the program button down when you plug the connectors back in.



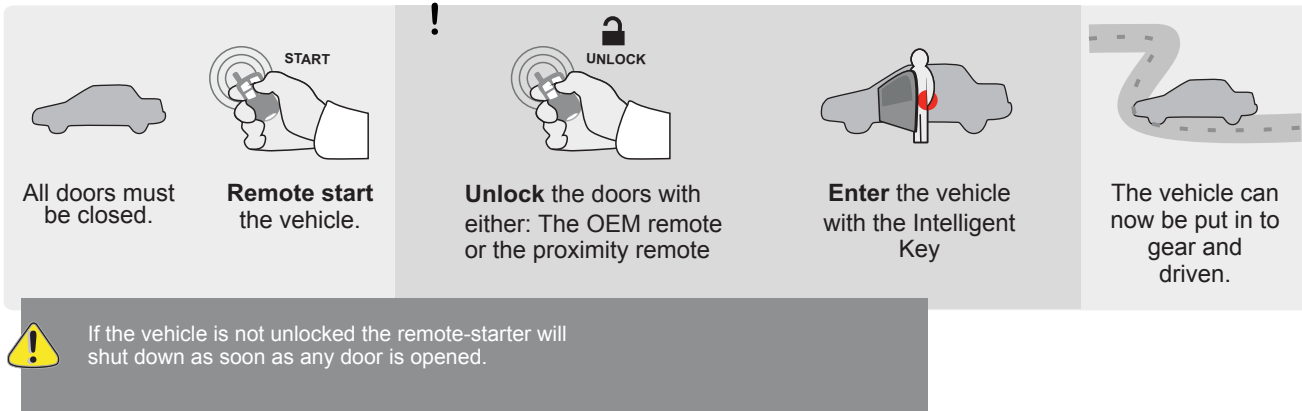
Step 5: Test the System

1. Press the 'lock' button on your OEM fob three times in succession, with each press 1 second apart. The vehicle ignition/accessory circuits will turn on after a few seconds. Another few seconds later the starter motor will engage. You will see the Blue light on the remote start module flash every time you press the Lock button.
2. Step on the brake pedal to stop the engine.

Step 6: Close it Up

Now gather up all of your wiring and neatly bundle it together using zip ties or electrical tape. Find a secure place to put the remote start module and use zip ties to secure it. **Make sure that the remote start wires are not near any moving parts on the steering wheel, pedals or emergency brake! Re-Install any panels that were removed to gain access to key switch in reverse order they were removed. ENJOY!**

Functionality: Push-To-Start Trucks



If you have any installation questions or problems, call for tech support
520.579.1531